

# Alignment Planner Workspace with Roadmap Planning

Executives, portfolio managers, Enterprise Project Management Office, and other stakeholders struggle with outcome-driven planning as strategy and work delivery often resides in silos. And that is why organizations cannot consistently achieve desired business outcomes across the enterprise. To be successful they need to enter their goals or objectives, prioritize work based on those goals and create high-level plans by sequencing Agile and traditional work across the enterprise. They also need to track the progress of work to make adjustments when priorities shift.

ServiceNow's Alignment Planner Workspace (APW) provides an end-to-end integrated planning experience where users can enter their goals and targets, prioritize all work based on those goals, create roadmaps and align work to ensure those goals are achieved.

Alignment Planner Workspace Roadmap Planning offers an interactive user interface that enables you to display and group plans based on any criteria. You can connect the entire enterprise, ensuring everyone in the organization is aligned to deliver shared outcomes and adjust work on the fly.

The Alignment Planner Workspace enables you to:

- Develop, manage, and share flexible portfolio plans based on desired way of visualizing and grouping work.
- Create goals and connect work to strategy to deliver desired outcomes.
- Gather, review and prioritize initiatives and work items all in a single workspace before strategically committing them in the roadmap.
- Create a roadmap based on work items such as projects, epics, or demands
- Sequence work to support milestones.
- Plan both your agile and traditional work within a single roadmap.

## Visualize and group work to deliver business outcomes

Planners can quickly create, manage, and share flexible portfolio plans based on their desired way of visualizing and grouping work to uncover planning insights that drive strategic outcomes.

## Create goals aligned to strategy

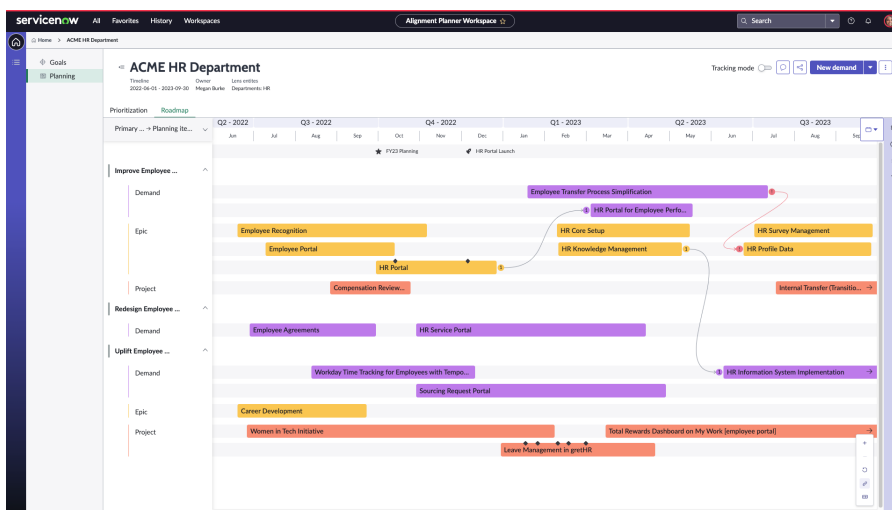
Enterprise Project Management Office (ePMO) and business owners can enter goals to ensure all work is aligned to those goals to drive strategic outcomes.

## Deliver outcomes with confidence

Portfolio managers, product managers, service owners, application owners, Agile, portfolio managers and others can plan both agile and traditional work from a single roadmap and focus on key deliverables and milestones with tracking mode.

## Achieve more when you align work to strategy

Connect work to strategy by cascading goals set by leadership and business owners for all work. Get the whole team collaborating directly within roadmaps by sharing plans and facilitate collaboration among stakeholders across the business.



Enter goals, prioritize backlog and cascade your roadmap across the organization. Identify roadmap dependencies, set milestones and track progress to achieve business outcomes.

**Lenses and Portfolios**

With Lenses and Portfolios planners can quickly create, manage, and share flexible portfolio plans based on their desired way of visualizing and grouping work to uncover planning insights that drive strategic outcomes.

**Goal Framework**

Goals Framework within APW enables ePMO and business owners to enter their goals and automate targets, cascade across the organization, and align work to ensure those goals are achieved. Goals Framework accommodates various types of frameworks such as Objectives and Key Results (OKRs) to let your organization strategize in the way that best fits.

**Portfolio Prioritization**

Portfolio Prioritization within APW enables planners to gather, review and prioritize initiatives and work items all in a single workspace before strategically committing them in the roadmap.

**Simple roadmap setup**

Out of the box roadmap items includes program, project, demand, epic, SAFe epic, and SAFe feature.

**View details for better usability**

When you select a roadmap item, you see the item details in a windowpane on the right column. Depending upon your selection, you can view details such as assignment, any related projects or stories, and relevant conversations.

**Connected roadmaps**

Before creating your roadmaps you need to setup your hierarchies and then you can cascade your roadmaps from top down to teams making sure every roadmap in the organization is connected and aligned to the top strategy roadmap.

**Plan agile and traditional work**

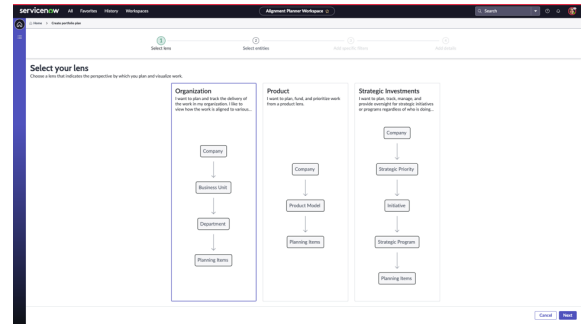
You can plan traditional and agile work in a single roadmap. Having one single roadmap regardless of work delivery is critical for organizations that are using hybrid project management. So work regardless of the delivery method can be tracked and connected to the high-level strategy.

**APW integration with Microsoft Azure DevOps**

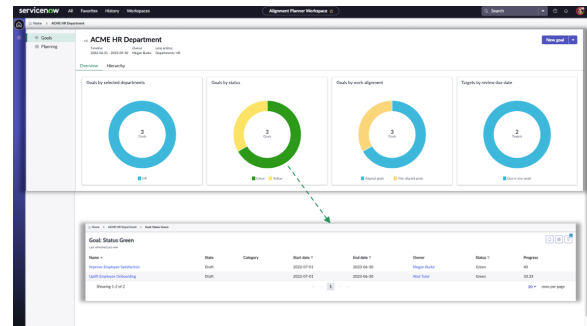
This integration that includes import, export and bi-directional synchronization between Microsoft Azure DevOps(ADO) and APW, enables Microsoft ADO users to continue execution without interruption while planners can gain the benefits of planning in APW.

**APW integration with SAFe**

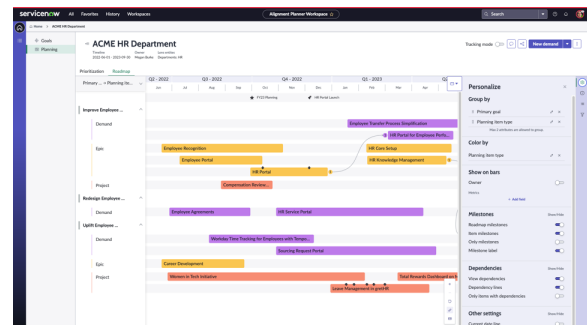
The Scaled Agile Framework (SAFe) integration enables customers to manage their SAFe portfolio in APW by creating roadmaps and planning epics. Once the portfolio planning is done, planners can break epics down into features and plan program increments in the SAFe boards. This results in enhanced planning and tracking no matter the work delivery method.



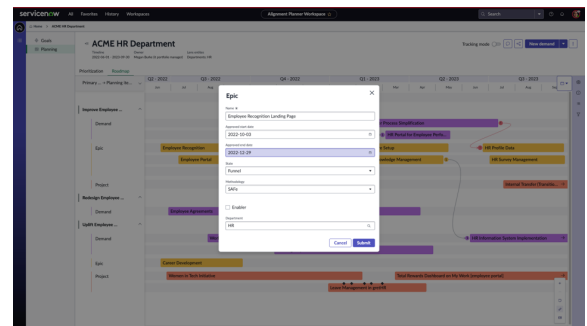
Select your desired lens including organization, product or strategic investment.



Analyze and drill into your goals



Group by and color by functions



Add new tasks directly from roadmap

### Common planning items across different levels

Users at any level of the organization can plan and track using the common planning items. For example when product managers plan epics, portfolio managers can view and track these epics in their portfolios. Portfolio managers can also create epics within their plans and assign them to product managers. This enables a common planning structure as organizations decompose work from strategy to the lowest work item.

### Roadmap Milestones

You can create and manage milestones at the work-item level (project, demand, and epic) or at your planning organization level. This capability enables you to focus on your deliverables and sequence your work effectively.

### Roadmap Tracking

You can toggle into the tracking mode view to monitor the progress of work and get up to speed on status with green, yellow, and red visuals and percentage complete.

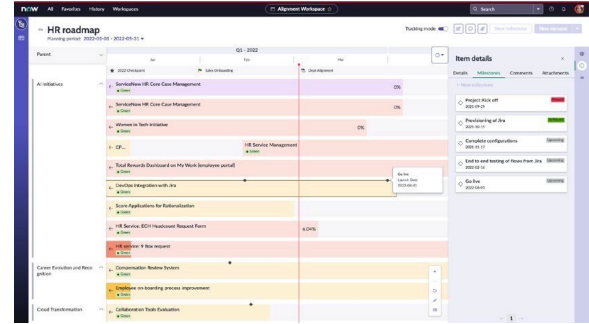
### Roadmap dependencies

Visualize relationships between planning items so conflicts can be quickly resolved and work flows properly across portfolios.

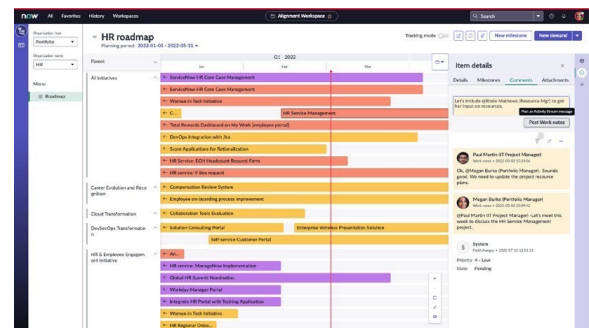
Learn more

Please visit

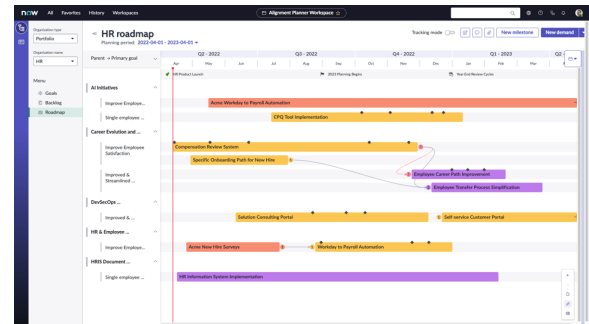
[www.servicenow.com/spm](http://www.servicenow.com/spm)



View item milestones with details



Engage in real-time in-context conversations



Visualize roadmap dependencies