

# Now on Now ESG the easy way

## Challenge

Enterprises are committed to achieving transparency, value, and societal impact through audit-ready **Environmental, Social and Governance (ESG)** data and efficient disclosure processes; yet many struggle to maintain data integrity and transparency across siloed systems.

## Solution

Using **ServiceNow ESG Management**, we've streamlined our data collection, auditing, and reporting to help us run industry-leading ESG programs.

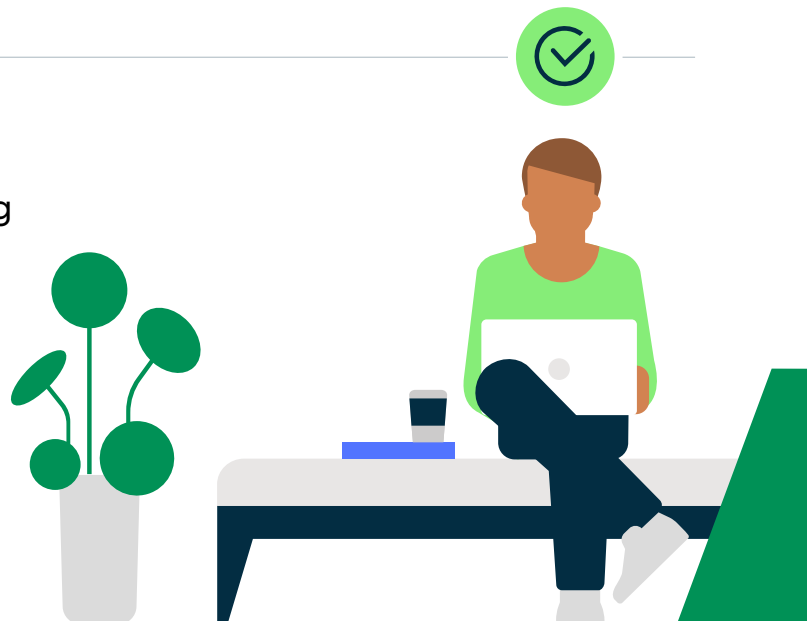
## Thanks to the Now Platform...

We were able to uplevel our ESG efforts by creating a repeatable and auditable process for collecting, documenting, and approving ESG data that meets GRI and SASB frameworks.

What's next? Integrating ESG Management with our Strategic Portfolio Management and Integrated Risk Management products to create an even more powerful ESG Command Center.

## Business value

- ✔ More accurate data collection and reporting
- ✔ A clear picture of all our ESG efforts
- ✔ Easier stakeholder inclusion to achieve ESG impact



**We can help you accelerate your ESG journey.**

Contact your account team to set up a chat with our ESG practitioners.