

Alignment Planner Workspace

Align work to strategy to deliver business outcomes

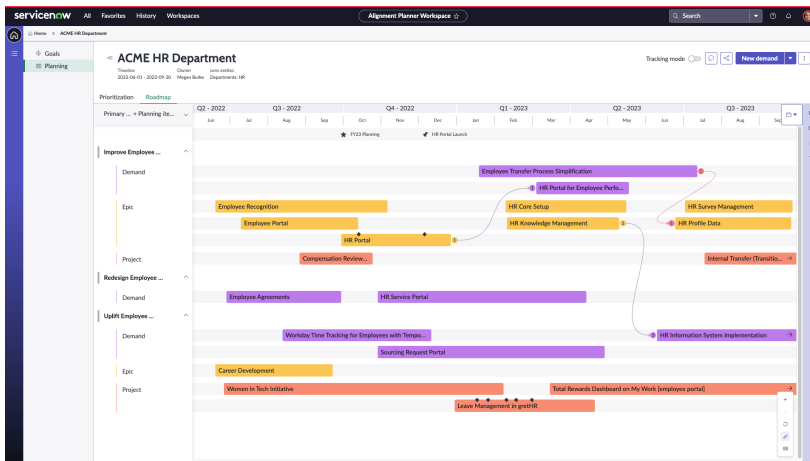
Organizations are being asked to set strategies to deliver value faster while managing change in this disruptive market. They need to communicate their strategy effectively with their teams and employees and align investments and resources to their strategy responsively. Enterprise leaders continue to wrestle with how to optimize and measure value delivery in a way that aligns with corporate strategy and evolving customer needs while keeping their employees engaged and inspired.

ServiceNow's Alignment Planner Workspace (APW) provides an end-to-end integrated planning experience that aligns strategy to execution and supports better decisions at every level of the organization. APW is a single, actionable workspace where Enterprise Project Management Office (EPMO) and business leaders can define goals and targets and cascade them across the organization; gather, review, and prioritize initiatives and work items that align with the strategy and commit to them once they are on the roadmap all in a single platform.

What makes APW a game changer is that information is visible at multiple levels – enterprise, portfolio, team – and adjustable to every perspective. Teams have the autonomy to work the way they are most effective, whether it's Agile, traditional, or a hybrid mix of the two. Also, investment owners and strategy leaders retain governance and control with the ability to monitor progress against goals or OKRs. And when change is needed, it can be done quickly with clear communication about what is happening, why and providing a clear understanding of implications and dependencies.

The Alignment Planner Workspace enables you to:

- Create goals and connect work to strategy to deliver desired outcomes.
- Prioritize initiatives and work items in a portfolio prioritization before committing in the roadmap.
- Plan, create dependencies, and track roadmaps intuitively.
- Sequence work to support milestones.
- Plan both your agile and traditional work within a single roadmap.



Enter goals, prioritize backlog and cascade your roadmap across the organization. Identify roadmap dependencies, set milestones and track progress all in a single workspace.

Deliver desired outcome

Create goals and connect work to strategy across the enterprise.

Prioritize all initiatives and align them to strategic goals

Consolidate, review, and prioritize work items from a single source

Plan your work and track progress so work flows properly across portfolios

Plan, create dependencies, and track roadmaps intuitively. Sequence work to support milestones.

Give agile and traditional teams a clear plan

Plan both your agile and traditional work within a single roadmap.

“We are building a community around common goals, business outcomes, milestones, and a culture of ‘easy pivot’ using Alignment Planner Workspace.”

Alice Saiki, Director, PMO
Portfolio Management at ServiceNow

Lenses and Portfolio Plans

Planners can quickly create, manage, and share flexible portfolio plans based on their desired way of visualizing and grouping work to uncover planning insights that drive strategic outcomes.

Goal Framework

EPMOs and business leaders can enter their goals and automate targets, cascade across the organization, and align all work at every level of the organization to ensure those goals are achieved. Goal Framework in APW is flexible enough to accommodate various types of common goal frameworks such as OKRs to let your organization strategize in the way that best fits.

Portfolio Prioritization

Managing and tracking backlogs of work coming from different groups can be overwhelming especially at the enterprise level. Planners need a single source of truth to have visibility to all backlogs. The Portfolio Prioritization enables planners to gather, review and prioritize initiatives, and work items all in a single workspace before strategically committing them in the roadmap.

Roadmap Planning

Roadmap Planning enables stakeholders to visualize and communicate cross-functional plans. You can establish your top initiatives and the strategy cascades down from top to bottom so that all roadmaps in the organization are connected to the original strategic goals.

You can easily create roadmaps for all your demands, epics, programs, projects, and other task types regardless of the work delivery method. Your enterprise portfolio managers can view all work that is aligning to the strategic initiatives, create and visualize dependencies between planning items so conflicts can be quickly resolved, and work flows properly across portfolios. You can also track your progress by creating milestones and track percentage completion. This enables planners to sequence work effectively to support key milestones.

Overall, the APW is a comprehensive, integrated planning tool that enables planners to align work with strategy to deliver business outcomes.

To learn More:

Please visit www.servicenow.com/spm



A Gallup report shows that **just 22% of employees feel that their leaders have a clear direction, and just 13% of U.S. employees strongly agree that their leadership communicates effectively with the rest of the organization.**

Leaders: Bring Your Strategy Back Into Focus (Ratanjee, 2021)

“Organizations that expose the dependencies between work and strategic goals significantly increase the likelihood of achieving strategic portfolio management.”

Gartner, Effective Strategic Portfolio Management Drives Better Business Outcomes, 2021

