



Zurich Cloud Governance Suite

Last updated: 05/04/2026

Some examples and graphics depicted herein are provided for illustration only. No real association or connection to ServiceNow products or services is intended or should be inferred.

ServiceNow, the ServiceNow logo, Now, and other ServiceNow marks are trademarks and/or registered trademarks of ServiceNow, Inc., in the United States and/or other countries. Other company and product names may be trademarks of the respective companies with which they are associated.

Please read the ServiceNow Website Terms of Use at www.servicenow.com/terms-of-use.html

Company Headquarters
2225 Lawson Lane
Santa Clara, CA 95054
United States
(408) 501-8550

Table of Contents

Cloud Governance Suite.....4

Cloud Governance Suite

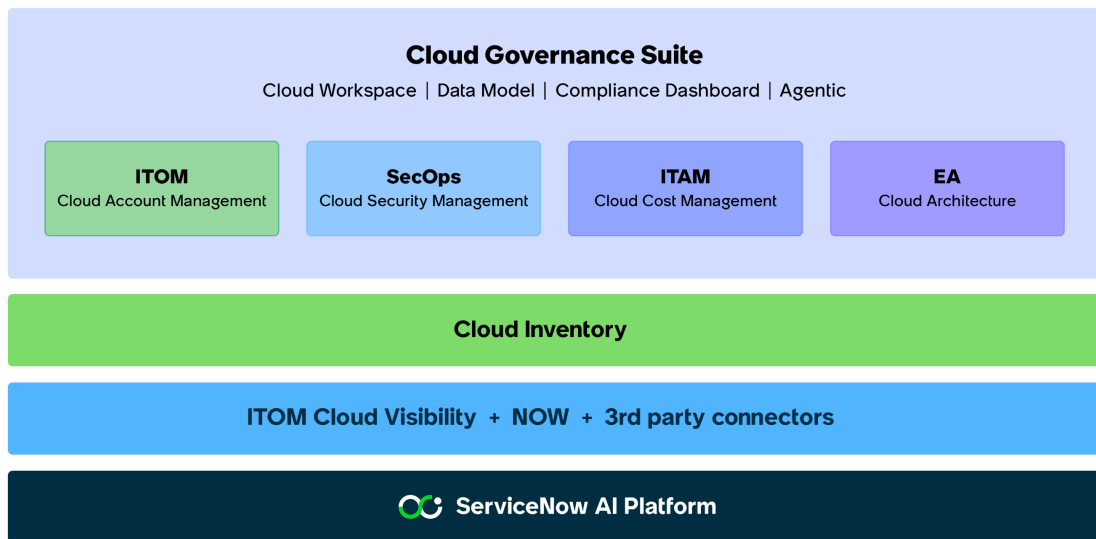
The Cloud Governance Suite unifies cloud solutions from technology workflows into a single experience with a shared data model. It helps improve cloud compliance, security, and cost management for teams responsible for cloud governance—often referred to as the Cloud Center of Excellence (CCoE) or Cloud Enablement teams.

Cloud Workspace is part of the Cloud Governance Suite and provides a unified experience and data model for ServiceNow® cloud solutions.



Cloud Workspace provides a centralized, consistent experience for managing all ServiceNow cloud solutions as part of the Cloud Governance Suite.

Key feature in Cloud Workspace is Cloud Account Management (CAM), which is available through the ITOM Cloud Accelerate offering. CAM focuses on automating the entire cloud account life cycle—from requesting and provisioning new cloud accounts to managing their governance, suspension, reactivation, and certification.

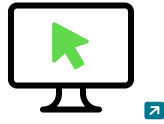
Cloud Governance Suite overview



Get Started

<p>Explore</p>  <p>Learn about Cloud Account Management concepts and features.</p>	<p>Configure</p>  <p>Configure environment and user access.</p>
--	---

Use



Become familiar with workflow to create and manage cloud accounts.

Reference



Get details about components like fields, tables, and properties.